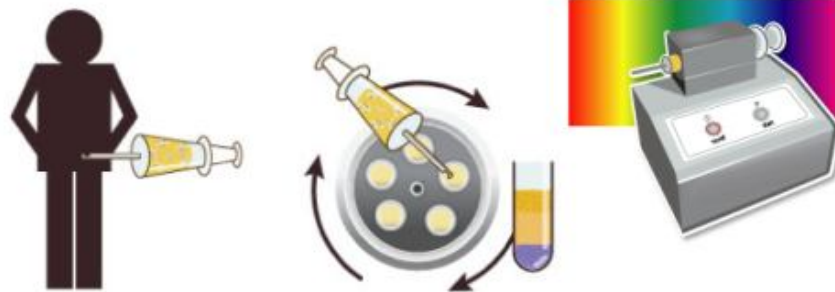


# AdiStem™

## Basic Overview of Cosmetic Applications of AdiStem Technology

Harvest → Separate → Activate

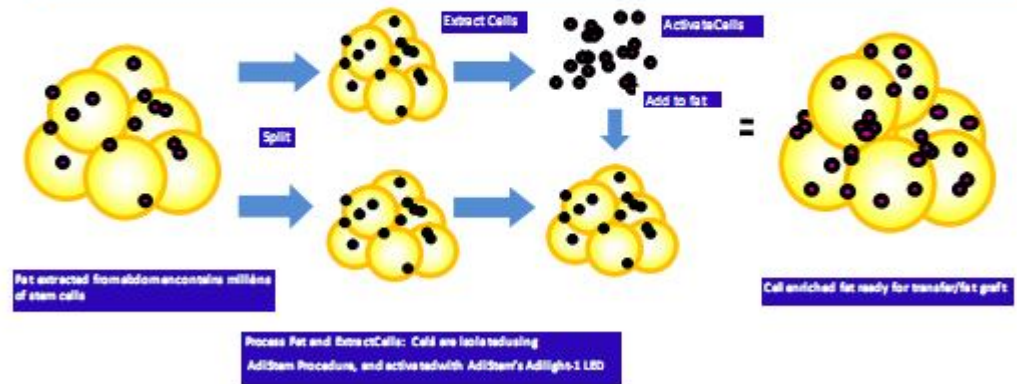


- 1 A small amount of fat - 40 cc is taken from your waist area.
- 2 Stem Cells are separated from fat cells.
- 3 Your Stem Cells are activated with AdiLight - 1 LED

- Fat transfer to fill in defect/augment/reconstruct
- Stem cells isolated from adipose tissue + PRP are mixed with fat used to fill in defect or create augmentation/reconstruction
- Cell enriched fat transfer supports fat graft and maintains volume
- Without stem cells, fat is reabsorbed back into the body

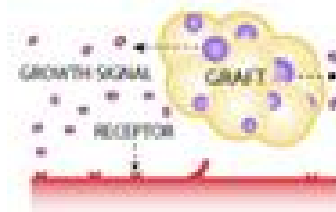
AdiStem™

### Cell Enriched Fat Transfer

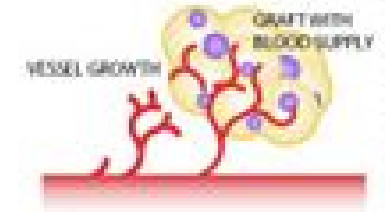


- Stem Cells Support fat graft with new blood vessel growth

After Implant



Over Time



5/F CNT Tower  
338 Hennessy Road, Wanchai  
Hong Kong

www.AdiStem.com

# AdiStem™



- Fat + Stem Cells used in Breast Augmentation and Reconstruction for a natural look

In the picture below, fat combine with stem cells was injected into defected area

- Fat is injected into defected area of the skull



**AdiStem™**

Example (Seoul, Korea):

24 months after

This block contains two side-by-side photographs of a woman's chest. The left photo shows her chest before the procedure, and the right photo shows her chest 24 months after the procedure. A small circular icon with a yellow and orange gradient is positioned between the two photos. The AdiStem logo is in the top right corner.

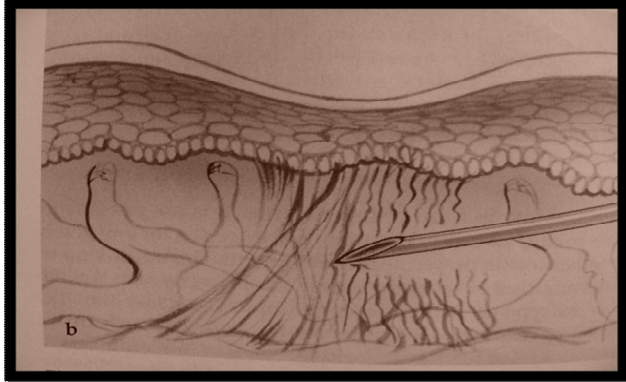
**AdiStem™**

**Before Fat Transfer**      **One Week after Fat Transfer**

This block contains two side-by-side photographs of a man's face. The left photo is labeled 'Before Fat Transfer' and the right photo is labeled 'One Week after Fat Transfer'. Red circles are drawn around the man's eyes in both photos to highlight the improvement in the eye area. The AdiStem logo is in the top right corner.

5/F CNT Tower  
338 Hennessy Road, Wanchai  
Hong Kong

**Special Procedure using a Nokor Needle to make an incision and inject fat under and elevate the scar**



Undermining (Subsicion) with an 18G needle or Nokor needle Subsicion is always necessary to create a pocket for stem cells and elevate the scar

**Contacting us:**

Office Telephone (Bangkok): 02 302 1405

Fax: 02 262 1400

John Wood, ND – Business Development Manager

[jwood@adistem.com](mailto:jwood@adistem.com)

Kyra Virulchanya – Corporate Affairs Manager

[kyra@adistem.com](mailto:kyra@adistem.com)

Rattananuch Lohachala – Marketing Communications Manager

[tong@adistem.com](mailto:tong@adistem.com)

### Acne Scarring – facial rejuvenation



8 months post procedure

5/F CNT Tower  
338 Hennessy Road, Wanchai  
Hong Kong

[www.AdiStem.com](http://www.AdiStem.com)